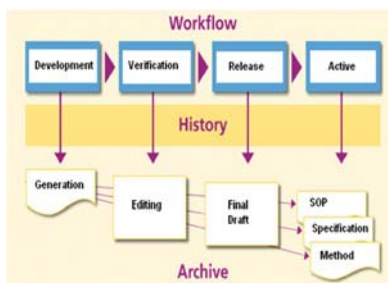


The Dashboard lets you quickly identify limit violations and samples ready for release



Identify trends quickly with automatically generated quality control charts



Complete document management with workflow and version control

Additional Modules

- ▶ Capacity Planning
- ▶ Chemical Management
- ▶ Document Management
- ▶ Stability Testing
- ▶ Automotive Data Capture
- ▶ Rawdata Archive
- ▶ WebShop

LISA.lims, the premier Laboratory Information Management System, helps you to automate, organize, and standardize complex workflows for tracking crucial information required for making quick and prudent business decisions.

An Off the Shelf Solution

LISA.lims is a fully configurable commercial off-the-shelf software solution which can be easily tailored to the specific business requirements of your industry, corporate or government sector.

Complete Audit Trails and Regulatory Compliance

ISO 17025, GxP, FDA 21 CFR 11 Compliant:

- ▶ Audit Trails
- ▶ Access Control
- ▶ Digital Signatures
- ▶ Reporting
- ▶ Time Stamps
- ▶ Versioning
- ▶ Workflow Management
- ▶ Standardized Templates

Module Based For Top Efficiency

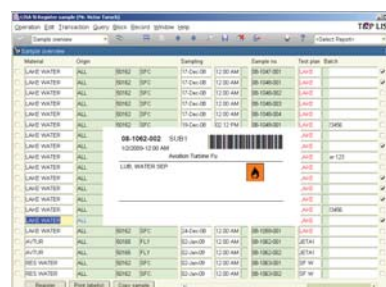
LISA.lims' broad spectrum of functions helps you meet all of your requirements within one system while its modular design gives you an option to add more functionality as you grow.

Industries Served by LISA.lims

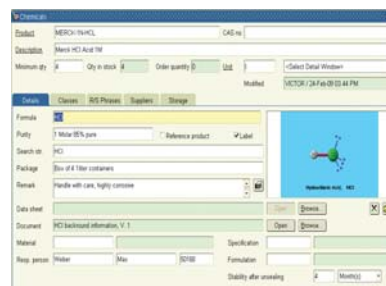
- ▶ Petrochemical
- ▶ Food & Beverage
- ▶ Contract Laboratories
- ▶ Pharmaceutical / Biotechnology

Sample ID	Unit	Unit	Unit	Unit
Pathlength	SOP 91.23	mm	0.05	0.05
A219	SOP 91.23	abs	0.025	0.045
A201	SOP 91.23	abs	2.044	2.044
A202	SOP 91.23	abs	1.379	1.377
A203	SOP 91.23	abs	1.976	1.972
A204	SOP 91.23	abs	1.890	1.891
Path	SOP 91.23	abs	acceptable range	acceptable range
A205A208	SOP 91.23	abs	2.096	2.051
Path	SOP 91.23	abs	acceptable range	acceptable range
Concentration	SOP 91.23	µg/g	0.0	0.0

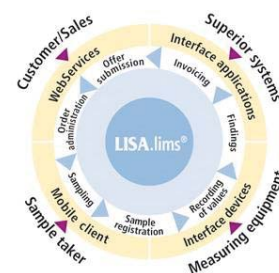
Customer specific internet portals for instant data access and exporting



Incorporated barcodes for efficient sample tracking



Complete chemical and formulation management



Visit our website for more information or a product demonstration



Systat Software Inc 1735 Technology Drive Suite 430 San Jose, CA 95110-1386
Tel: (800) 797-7401 - FAX: (800) 797-7406 - Email: info-usa@systat.com

Petrochemical

LISA.lims supports the production process by providing instant and accurate quality control data information. Information from several sites or locations can be gathered in one view allowing you to make quick and informed decision based on reliable data. To achieve complete automation LISA.lims creates connections with 3rd party Instruments, Enterprise Resource Planning systems (ERP) and Manufacturing Execution System (MES) systems.

Features/Benefits:

- ▶ Automate your test requests with certified SAP/MES connections
- ▶ Establish bi-directional test equipment interfacing which increases efficiency and eliminates transcription errors
- ▶ Complex yet flexible automatic report generation
- ▶ Complete tracking and version control document, SOP and CoFA management from development to release
- ▶ Rich Quality Control Charts and Specification Limits makes sure nothing falls through the cracks
- ▶ Capacity and Resource Planning

Food and Beverage

Our solution allows you to meet the increased tracking required by the FDA throughout the manufacturing and distribution process. With LISA.lims you can implement the most thorough safety and quality testing requirements into your high volume work flow. We understand that food and beverage company's supply products for multiple regions so we allow for multiple specifications testing on a single product to meet the varying regulatory requirements.

Features/Benefits:

- ▶ Automated and Standardized Test Requests and Instrument Calibration
- ▶ Specification Management
- ▶ Customer Specific Certificate of Analysis
- ▶ Works in Multiple Languages
- ▶ Automate Your Test Requests with Certified SAP/MES Connections
- ▶ Capacity and Resource Planning
- ▶ Bi-directional Test Equipment Integration Increases Efficiency and
- ▶ Eliminates Transcription Errors

Contract Laboratory

Today's contract laboratories require software that not only can manage sample data efficiently but also supports other business functions. LISA.lims was developed for today's laboratories which act as complete business organizations that need to manage all aspects of operations such as supply tracking, QA & QC, reporting, instrumentation management, internal cost monitoring, documentation management and approval processes.

Features/Benefits:

- ▶ Invoicing and CRM functionality
- ▶ Select Only the Modules That Your Workflow Requires
- ▶ Customer Integration with Web-Shop and Web-Info Modules
- ▶ Create A More Efficient Lab by Reducing Data Entry and Manual Calculations
- ▶ Automatic Generation of Spike and Blank Samples
- ▶ Improve Turnaround Times
- ▶ Standardize and Automate Sample Registration
- ▶ Automatic Data Capture and Instrument Management Eliminate Transcription Errors

Pharmaceutical and Biotechnology

We support Pharmaceutical and Biotechnology industries needs in Quality Control and Manufacturing by supplying industry specific modules such as Stability Testing, Raw Data Archiving and Document Management while adhering to the strict policies of FDA 21 CFR 11. Our top of the line implementation and validation services make sure that our solution meets all of your key requirements.

Features/Benefits:

- ▶ Complete Audit Trails
- ▶ Inventory Management
- ▶ Environmental Monitoring
- ▶ Improve Sample Turnaround Times
- ▶ Incorporate Automotive Processes
- ▶ Maintained by Customer Instead of Relying on Vendors
- ▶ GLP,GMP, FDA 21 CFR 11 and ISO 17025 compliant
- ▶ Secure data access
- ▶ Single Database for Data Storage
- ▶ Batch Processing
- ▶ Role Based Security
- ▶ Certified SAP/QM IDI Interface

Petrochemical Companies That Use LISA.lims:



Food & Beverage Companies That Use LISA.lims:

